



GASA

Engineering & Mining Services

Mining - Engineering - Logistics - Plant Hire






COMPANY PROFILE



MAKING A
POSITIVE **IMPACT** TO
YOUR BUSINESS



Mining - Engineering - Logistics - Plant Hire

-  406/7 Moffat Street
Francistown
-  P O Box 40057
Francistown, Botswana
-  Tel: +267 241 0212
-  Fax: +267 240 8801
-  info@gasaholdings.com
-  www.gasaholdings.com

CO. REG C2009/6826 VAT # C10675101112



BACKGROUND

Gasa Holdings is an Engineering and Logistics citizen owned company inclusive of the workers. It was established and registered under the Botswana companies act in 2009 with purpose to Service Cross sectional industries (Mining, Water, and Power) across Botswana.

AIMS AND OBJECTIVES

- Provide Support Services to Mining sectors across Botswana to perform at best, effectively, efficiently and continuously.
- Contribute in the elevation of the country's economy.
- To be an imaging lead supplier of all mining, power generation and water requirements

MISSION

- To promote fair entrepreneurship and positive contribution to the country's economy.
- To build a long lasting relationship with our clients and business partners.



PROJECT MANAGEMENT APPROACH

Our project management and control system has a record of success in finishing projects on time, quality, and within budget. The system is effective on large and small projects where we manage multiple projects. Our system keeps the Project Manager abreast of the status of each deliverable and the project as a whole.

We are founded on a strong belief that the long-term growth and prosperity of a business is directly dependent on completing projects conscientiously. Our commitment to quality starts before the design process begins, and our work plan is the start of the quality process.

Prior to initiating a project, we develop detailed task descriptions and checklists to define project requirements and provide engineers and support services with an accurate basis for planning. We use systematic checking and control procedures for project drawings and documents. Our quality assurance program is directed toward compliance with technical, local, statutory, construction, safety and environmental codes or ethics.

PRODUCTS & SERVICES

It is our mission and great honour to always offer our customers with our services including but not limited to supply of:-

Engineering Services

- Plant shutdown planning and execution
- Structural and Equipment Installations
- Plant and Equipment Installation Testing & Commissioning
- Refurbishment Repairs and Rebuilds (Crushers, Gearboxes, Pumps, Hydraulic Motors and General Mechanical/ Electrical Equipment's)
- Mobile Cranes repairs and refurbishments
- Operate and Maintenance of Plants
- Civil works

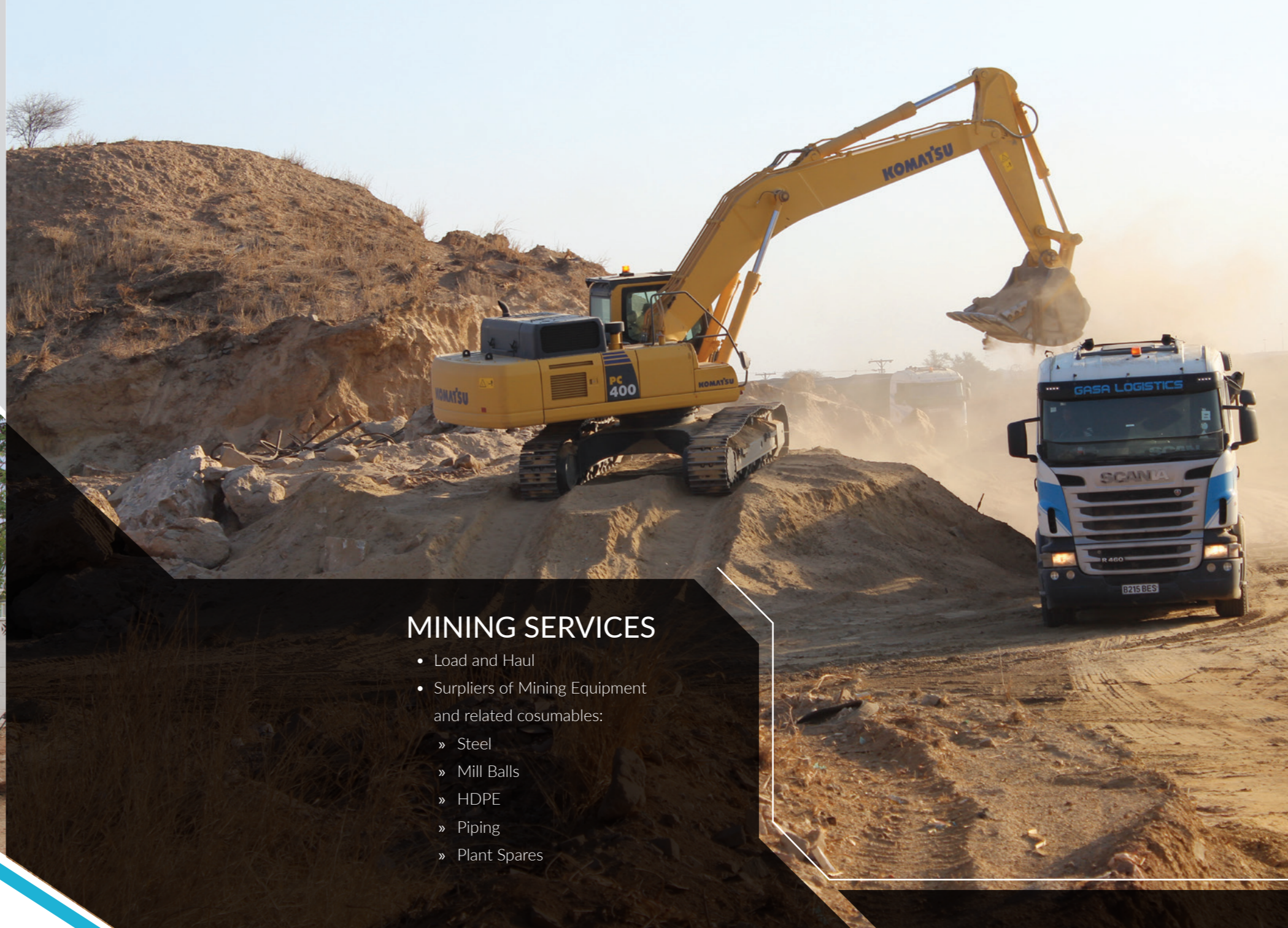
Welding and Fabrication

- Specialise in fabricating components for mobile equipment and special projects
- EMV Bowls and Buckets Refurbishments
- General fabrication of different products (chutes, liners, Buckets, Bowls etc.)



LOGISTICS & PLANT HIRE

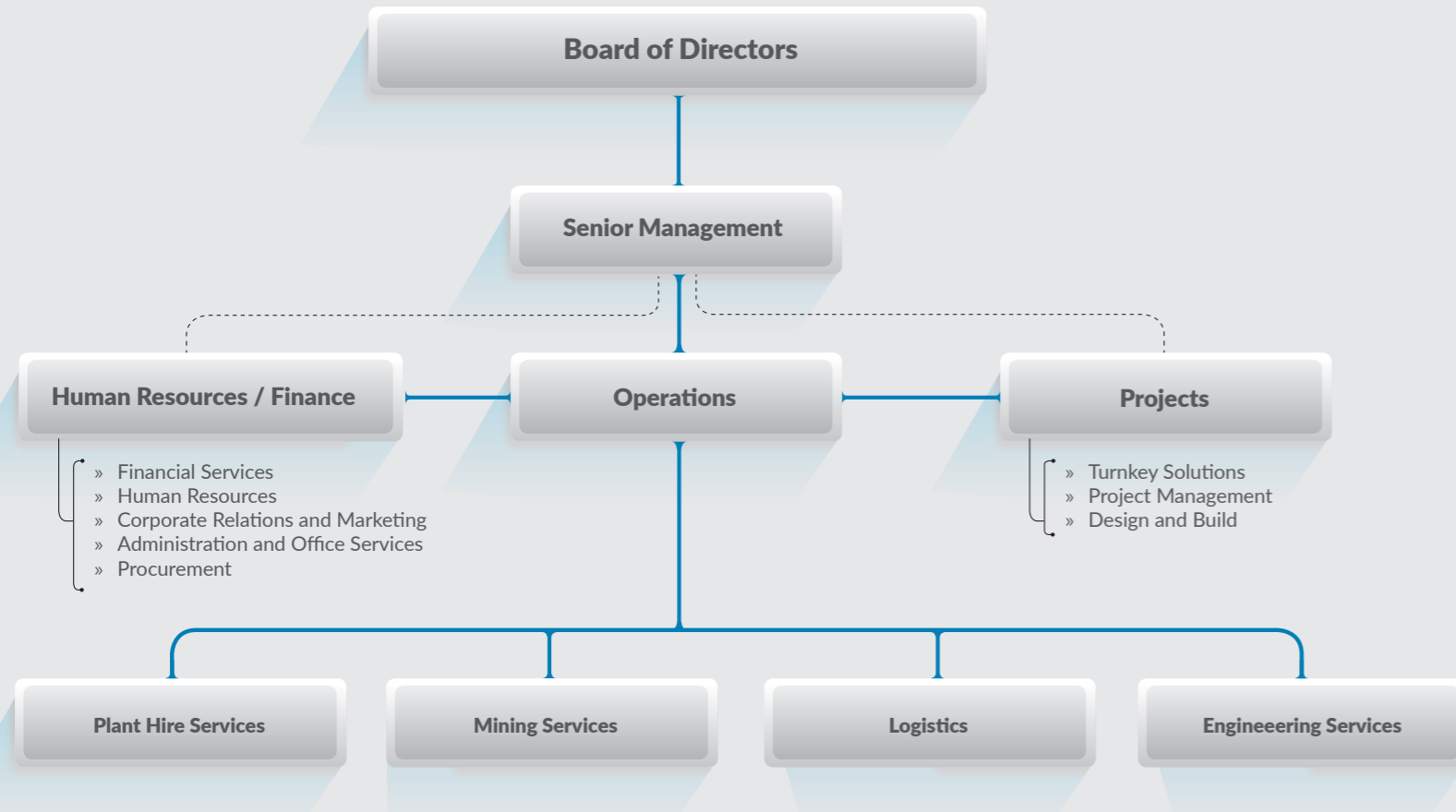
- Transport and Logistics
- Plant Hire
- Mobile Cranes



MINING SERVICES

- Load and Haul
- Suppliers of Mining Equipment and related consumables:
 - » Steel
 - » Mill Balls
 - » HDPE
 - » Piping
 - » Plant Spares

OUR ORGANOGRAM



STRATEGIC ALLIANCES AND PARTNERSHIPS




In recognizing that it is in our company's strategic interest to, in the short to medium term, cooperate with and learn from well-established engineering service providers in the industry, we have entered into strategic alliances with companies that offer services that complements our services, to afford our clients complete services. We have entered into technical support alliance with of other stake holders across the globe.






CLIENTS AND PARTNERS



CURRENT PROJECTS (ONGOING)

Client	Project Name	Contact Person	Status	Completion Due date
	Load & Haul of 15,000tons of Monarch Gold Tailings	Mr Poloko	Ongoing	June 2026
Seven Star Steel Pipe Group	Transportation of 14,000 pipes to Mmamashia, Mahalapye & Masama	Ms Leano	Ongoing	Feb 2024
	Transportation of 2,500tons of coal from Morupule Coal Mine to Botswana Ash	Mr Captain Themba	Ongoing	ADHOCK
	Transportation of 4,000tons of soda ash from Botswana Ash to Nelspruit, South Africa	Mr Captain Themba	Ongoing	Feb 2028

COMPLETED PROJECTS

Client	Project Name	Contact Person	Status	Completion Due date
	Load and Haul 225,000 BCM Monarch Gold Tailings	T. Kuriwa Mining Manager +267 72 323 942	Complete	May 2020
	Karowe Plant Optimisation – Design and Build 16tons Overhead Crane for the Tertiary Crusher	C Rabosigo Integrity Asset Engineer +267 72 770 838	Complete	Jan 2020
	Transport of 12,000tons of salt from Sua to Bulawayo Zimbabwe	B Ketlhogetswe Chief Buyer +267 6214337	Complete	Dec 2021
	Repair and Refurbishment of an Excavator Bucket	L. Paya Asset Engineer +267 721 600 201		
	Repair and Refurbishment of E-Cat Gearbox	O. Mafunye Asset Engineer +267 71 718 680		
	Repair and Refurbishments of various Gearboxes	P. Mapini Procement Manager +267 71 349 025		



MAKING A
POSITIVE **IMPACT** TO
YOUR BUSINESS



📍 406/7 Moffat Street
Francistown

✉️ P O Box 40057
Francistown, Botswana

☎️ Tel: +267 241 0212
Fax: +267 240 8801

✉️ info@gasaholdings.com
www.gasaholdings.com